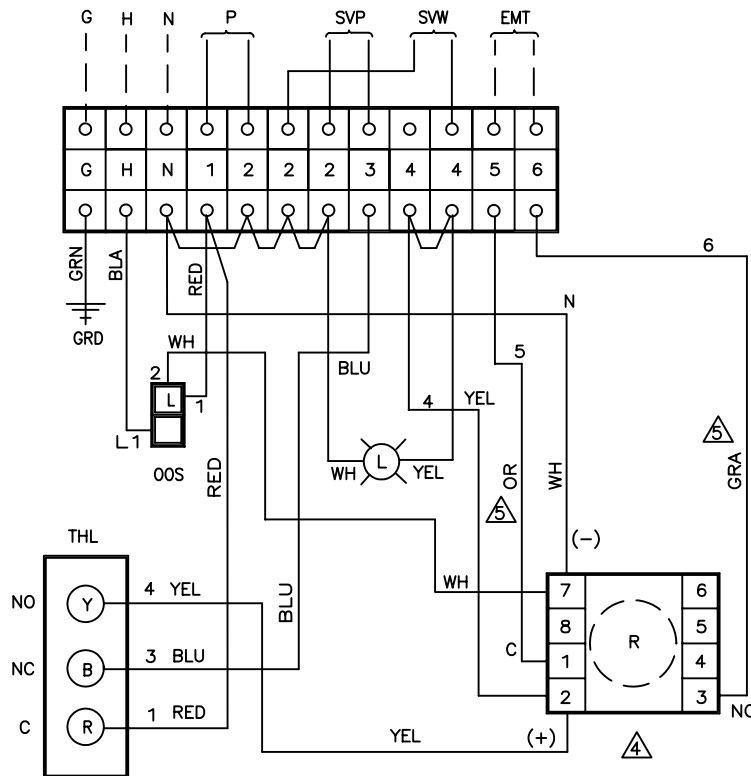


CONTROL LOGIC DIAGRAM



WIRING DIAGRAM

ABBREVIATIONS:

- G GROUND
- H POWER, HOT
- N NEUTRAL
- L LIGHT, POWER ON, HI-TEMP.
- P PUMP
- THL THERMOSTAT, HIGH LIMIT
- SVP SOLENOID VALVE, PILOT
- SWV SOLENOID VALVE, WATER
- R RELAY
- NC NORMALLY CLOSED
- NO NORMALLY OPEN
- C COMMON
- OOS ON-OFF SWITCH
- EMT ENGERY MANAGEMENT TERMINAL

NOTES:

- 1.) DOUBLE SOLENOID SYSTEM WITH RELAY
- 2.) SOLID LINES: FACTORY WIRING
- 3.) DOTTED LINES: FIELD WIRING

VERSION #2  
FOR MODULE #8651001020

W2

|      |  |     |       |         |
|------|--|-----|-------|---------|
| 5    | WIRE COLOR GRA & OR FROM RELAY DID NOT MATCH CONTROL LOGIC DIAGRAM | H.  | JH    | 3-11-03 |
| 4    | WIRING DIA. WAS FOR A POTTER & BRUMFIELD RELAY                     | VN  | JH    | 2-18-03 |
| 3    | SWAP B & Y ON THL  | SLA | JOHN  | 8-23-99 |
| 2    | UP-DATE WIRING   | RLP | JOHN  | 8-1-95  |
| 1    | PER NEW ENGINEERING STANDARDS                                      | DCL | JOHN  | 5-23-94 |
| REV. | DESCRIPTION  | BY  | CK'D. | DATE    |

|           |    |                 |            |           |                     |
|-----------|----|-----------------|------------|-----------|---------------------|
| ASME CODE |    | DESIGN PRESSURE | TYPE X-RAY |           | APPROX. WEIGHT LBS. |
| YES       | NO |                 | NONE       | SPOT/FULL |                     |
|           | X  |                 |            |           | N/A                 |

|  |      |         |           |               |            |   |  |  |  |      |   |
|--|------|---------|-----------|---------------|------------|---|--|--|--|------|---|
| TITLE  |      |         |           |               |            | CONTROL LOGIC & WIRING DIAG.<br>COMPACT WITH ALARM RELAY ONLY |  |  |  |      |   |
| THIS DRAWING, INFORMATION AND THE SUBJECT MATTER THEREOF, ARE THE SOLE AND EXCLUSIVE PROPERTY OF PATTERSON-KELLEY CO, HARSCO CORPORATION, EAST STROUDSBURG, PA. IT MAY BE REPRODUCED BY THE PURCHASER OF THIS EQUIPMENT FOR THEIR INTERNAL USE ONLY. IT CANNOT BE DISTRIBUTED TO ANY OTHER FIRM OR PARTY WITHOUT WRITTEN CONSENT FROM OUR COMPANY. |      |         |           |               |            |   |  |  |  |      |   |
| <b>Patterson-Kelley</b><br>HarSCO<br>East Stroudsburg, PA 18301<br>570-421-7500<br>www.pattco.com  |      |         |           |               |            |   |  |  |  |      |   |
|  | BY   | DATE    | FILE SIZE | REFERENCE NO. |            |   |  |  |  |      |   |
| DRAWN  | RLP  | 7/21/03 |           |               |            |   |  |  |  |      |   |
| CHECKED  | JOHN | 6/2/94  |           |               |            |   |  |  |  |      |   |
| APPROVED   |      |         | B         | PRINT NO.     | 1000092677 |   |  |  |  | REV. | 5 |