

MODU-FIRE® Forced Draft

Boiler Models N750MFD & N1000MFD

VELOX™

Boiler Models N750VX & N1000VX

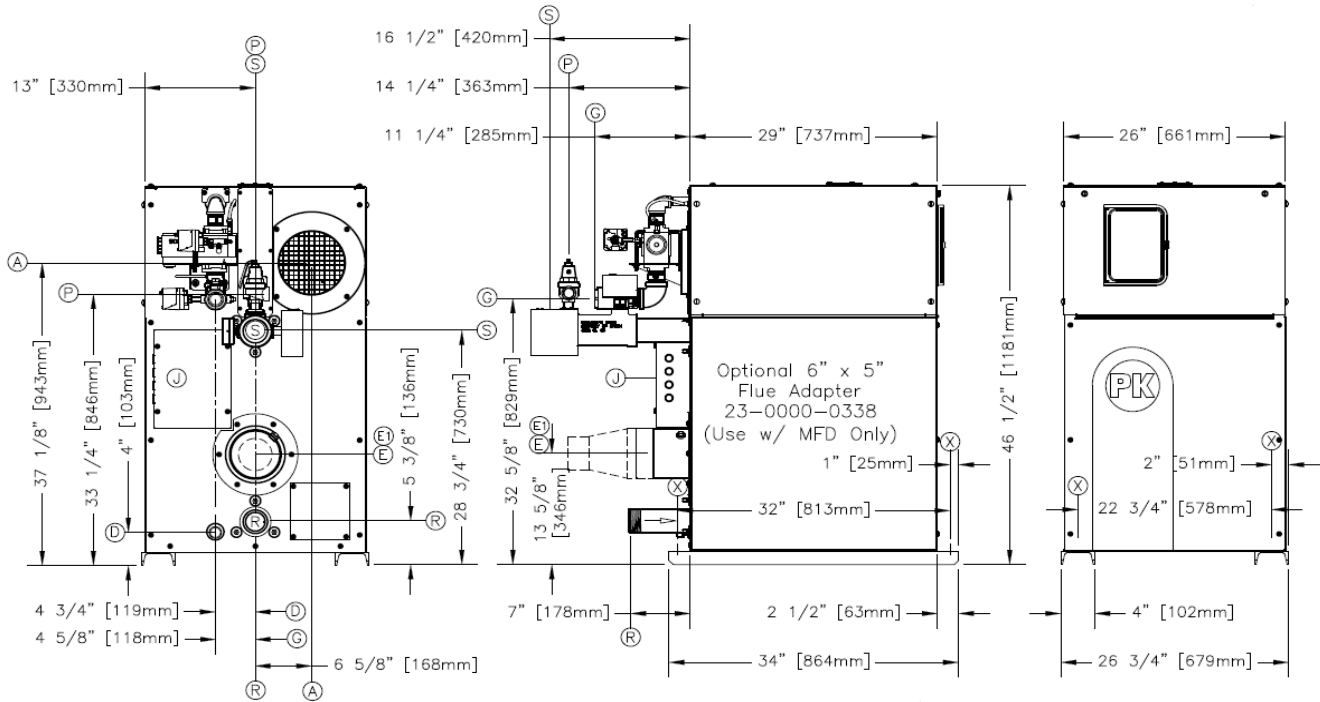


Rep Name: _____

Email: _____

Phone Number: _____

Date: / / /



MODU-FIRE®/ FD boilers require Category II (condensing-negative pressure) or Category IV (condensing-positive pressure) venting and VELOX™ / boilers require Category I (non-condensing) venting as defined in ANSI Z223.1/NFPA 54/CSA-B.149 Latest Edition.

BOILER CONNECTIONS	
A	Combustion Air Inlet 8" dia. stub
C	Drain (Fireside) 3/4" NPT-M
E	Exhaust Vent 6"
E1	Exhaust Vent (With Adapter - MFD Only) 5"
G1	Propane Gas 1 1/4" NPT-F
G2	Natural Gas 1 1/4" NPT-F
J	Wiring Junction Boxes inside cabinet
P	Pressure Relief Valve see list for options
R	Boiler Return 2 1/2" NPT-M
S	Boiler Supply 2 1/2" NPT-F
X	Anchor Bolt Locations (4) 3/4" dia holes

MODEL SELECTION				
Boilers	<input type="checkbox"/> N750MFD	<input type="checkbox"/> N750VX	<input type="checkbox"/> N1000MFD	<input type="checkbox"/> N1000VX
Fuel Options	<input type="checkbox"/> Natural Gas <input type="checkbox"/> Liquid Propane			
Turndown Ratio	5:1	1.2:1	5:1	1.6:1
Min Inlet Gas Pressure	NG - 3.5" w.c. / LP - 7" w.c.			
Max Inlet Gas Pressure	14" w.c.			
Input (BTU/hr)	750,000		1,000,000	
Output (BTU/hr)	638,000		850,000	
Min Input (BTU/hr)	150,000	604,000	166,000	610,000
Boiler HP	19.0		25.4	
Operating Weight	800 lbs.			
Shipping Weight	820 lbs.			
Boiler Water Content	6.2 gallons			
Shipping Dimensions	54"x32"x52" (LxWxH)			
Power Supply	<input type="checkbox"/> 208-240V, 1ph, w/neutral, 60Hz <input type="checkbox"/> 120V, 1ph, 60Hz (VELOX Only)			
Operating Current	< 6 Amps			
Recommended Minimum Circuit Capacity	10 Amps			

BOILER CONTROLS	
ASME CSD-1 is standard	
Complies with: GE GAP (IRI) guidelines GAP.4.1.0 and GAP.4.1.3 FM Global 6-4 Section 1.0	
Main Gas Train with Dual Shut Off	
Integrated Boiler Control, NURO Series	
Operating Thermostat, 130°-220°F (54.4°-104°C)	
High Limit Thermostat, Manual Reset, 100°-240°F (38°-116°C)	
High Exhaust Back Pressure Switch	
LWCO/Flow Switch, Paddle Type	
Combustion Air Proving Switch, Differential Pressure Type	
Combustion Blower, Variable Speed, 372.8 Watts	

PRESSURE RELIEF VALVE/PRESSURE-TEMPERATURE GAUGE		
<input type="checkbox"/>	30 PSIG 1 1/4"x 1 1/4"	15-160 psi/0-250°F
<input type="checkbox"/>	50 PSIG 1"x 1 1/4"	15-160 psi/0-250°F
<input type="checkbox"/>	60 PSIG 1"x 1"	15-160 psi/0-250°F
<input type="checkbox"/>	75 PSIG 1"x 1"	15-160 psi/0-250°F
<input type="checkbox"/>	80 PSIG 3/4"x 1"	15-160 psi/0-250°F
<input type="checkbox"/>	100 PSIG 3/4"x 3/4"	15-160 psi/0-250°F
<input type="checkbox"/>	125 PSIG 3/4"x 3/4"	15-160 psi/0-250°F
<input type="checkbox"/>	150 PSIG 3/4"x 3/4"	15-160 psi/0-250°F

A.S.M.E. SECTION IV DESIGN DATA	N750MFD	N750VX	N1000MFD	N1000VX
Max Pressure	160 psig			
Max Allowable Temperature	250°F			
Maximum Setpoint	220°F			
Heated Wet Surface Area	116 sq. ft.			
Flow Rate @ 20°FΔT	63.8 GPM		85 GPM	
Flow Rate @ 40°FΔT	31.9 GPM		42.5 GPM	

RECOMMENDED CLEARANCE FOR SERVICE ACCESS				
Front - 36"	Rear - 24"	Top - 24"	Left Side - 24"	Right Side - 24"

Notes:
 - Victaulic is a registered trademark of Victaulic Company, Easton PA, USA
 - Patterson-Kelley reserves the right to make changes at any time without notification



PROUDLY
DESIGNED & ASSEMBLED
IN THE U.S.A.