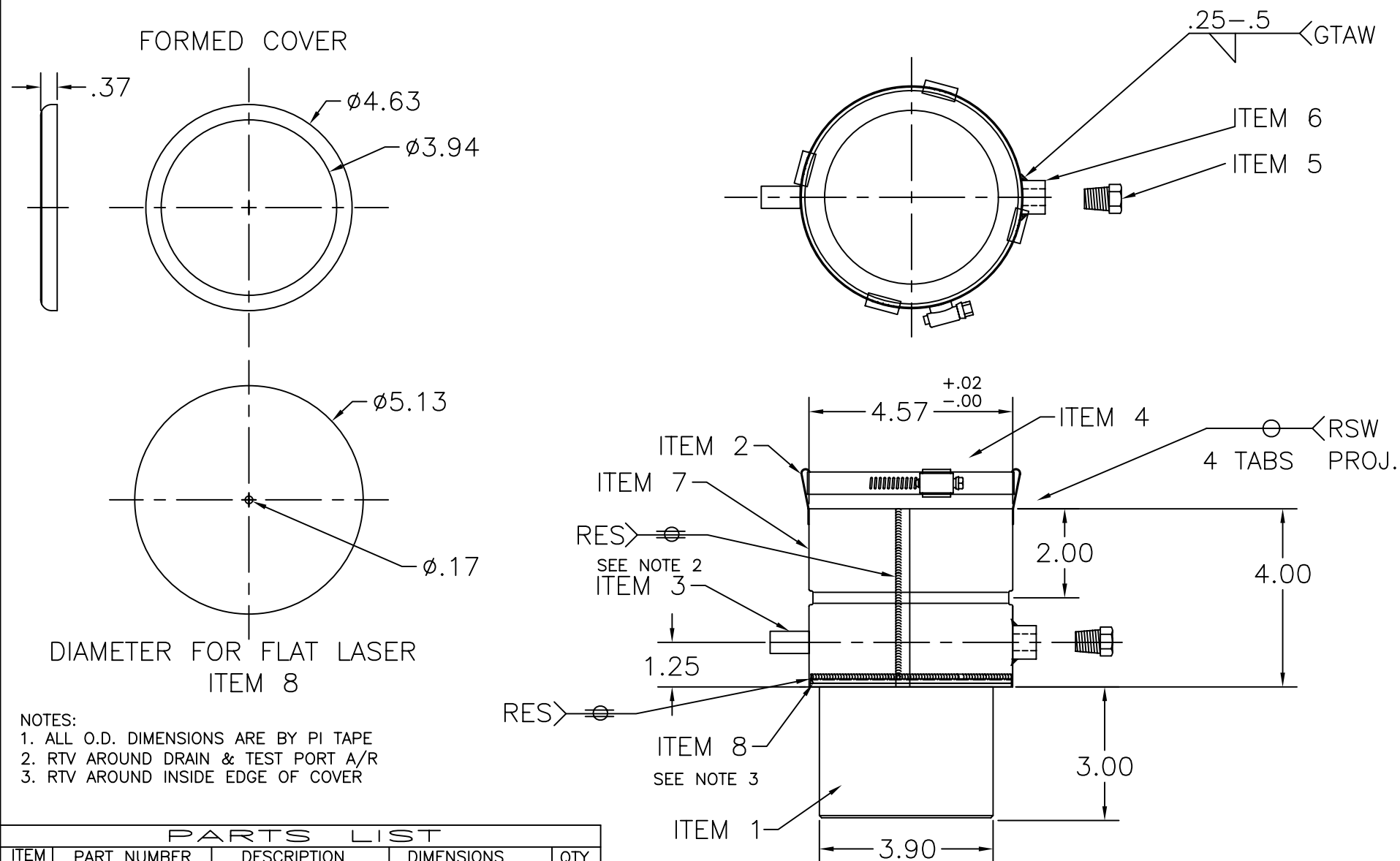


This drawing contains information proprietary to Heat-Fab, Inc. It is submitted in confidence and is to be returned upon request. This drawing and such information is not to be reproduced, re-printed, disclosed or used otherwise in whole or in part without the prior written authorization of Heat-Fab, Inc.

| REV | DESCRIPTION | DATE | APPROVED |
|-----|-----------------|----------|----------|
| — | INITIAL RELEASE | 08-10-07 | MFK |



PARTS LIST

| ITEM | PART NUMBER | DESCRIPTION | DIMENSIONS | QTY. |
|------|-------------|----------------|------------------|------|
| 1 | IP-V424 | EXTENSION | 3.9" DIA X 3.25" | A/R |
| 2 | 7GCTABG | BELTLOOP | SEE PRINT | 4 |
| 3 | AL29TUB2F | .50 DIA. DRAIN | SEE PRINT | 1 |
| 4 | 7022-64 | HOSE CLAMP | SEE PRINT | 1 |
| 5 | 1043 | HEX HEAD PLUG | — | 1 |
| 6 | 1044 | 316SS COUPLING | — | 1 |
| 7 | 7020AL29 | 4.57 DIA. BODY | .02 X4" X 14.56 | 1 |
| 8 | 9401KPCV | COVER | SEE PRINT | 1 |

INTERNAL SHOP DRAWING

| | | | |
|--|------------|---|--------------|
| TOLERANCES: .X = +/- .1 .XX = +/- .03 .XXX = +/- .010 ANGLES = +/- 3 DEG FRACTIONS = +/- 1/32 | | Heat-Fab Incorporated PHONE 1-800-772-0739 E-MAIL engineering@heat-fab.com 9401PKCPVC SERIES ADAPTER FOR THE MACH C300 | |
| DRWN BY: M.KARPAS | SIZE A | DWG NO. 9401PKCPVC | REV — |
| DATE 08-10-07 | SCALE — | UPDATED BY: — | SHEET 1 OF 1 |