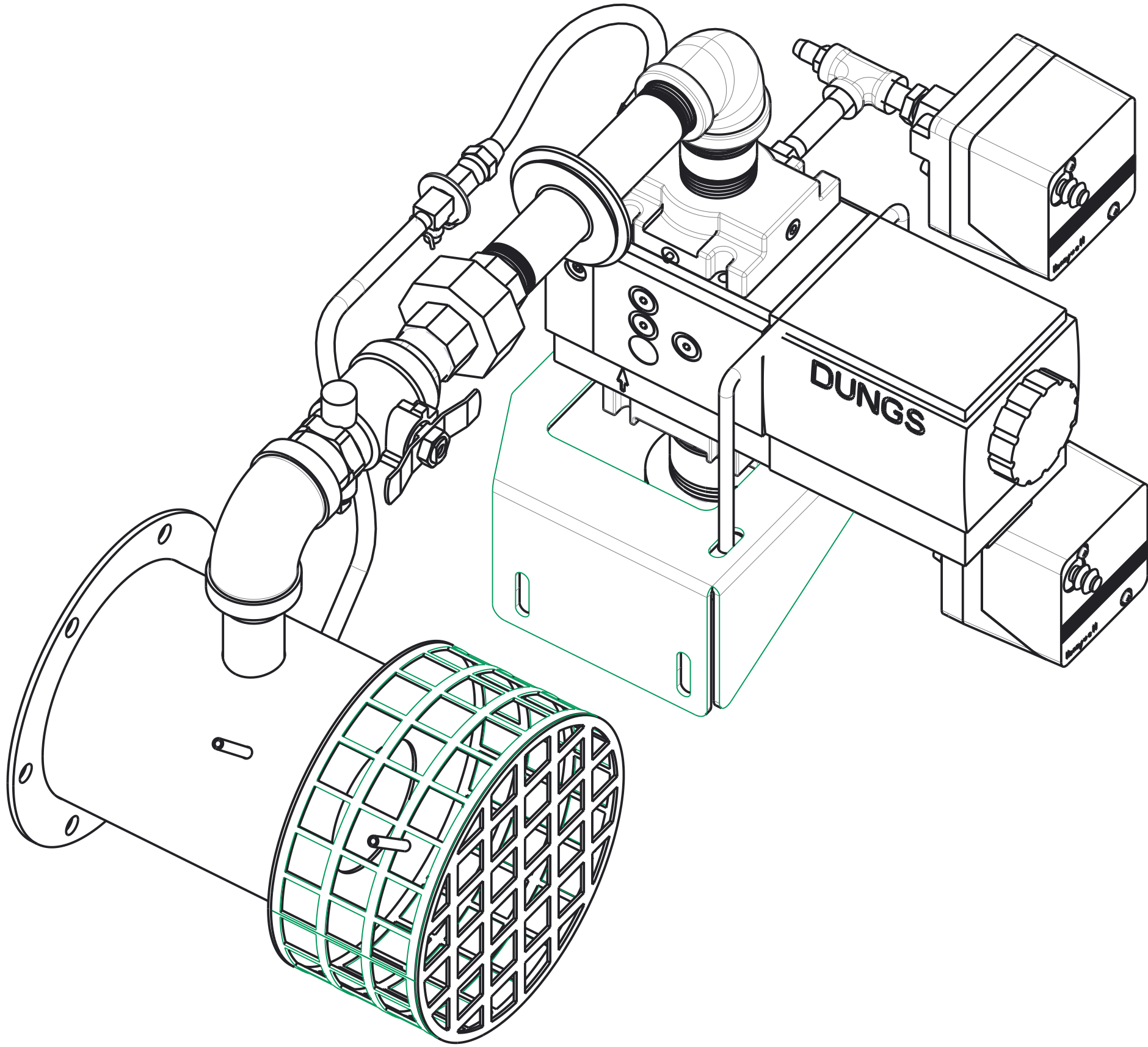


MARK	QTY UM	PART NO.	MATERIAL SPEC	DESCRIPTION
	EACH	2311000003	VARIOUS -	ASSY,MOD,GAS_TRAIN,COPPER,750-1000 -



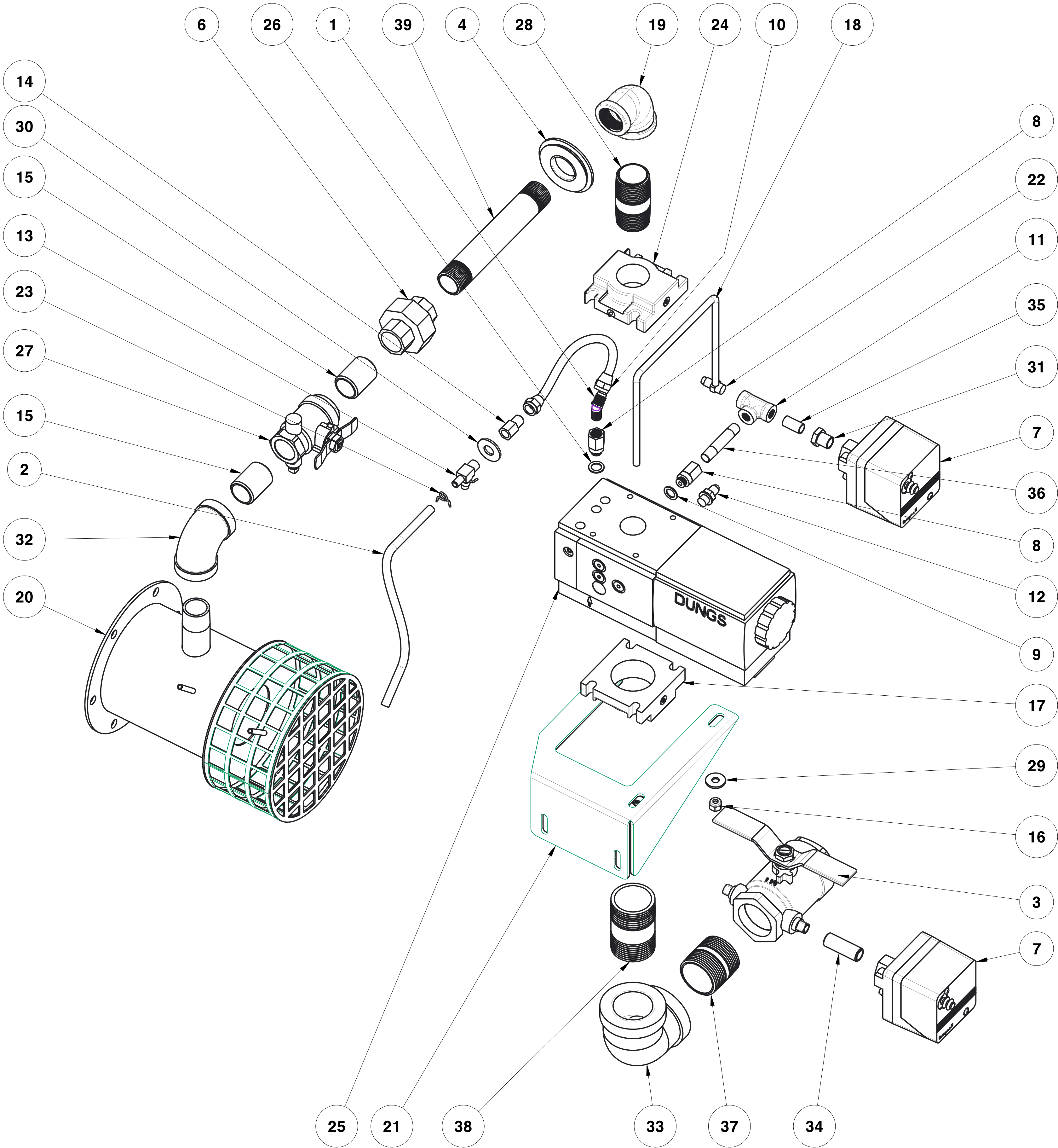
ISOMETRIC
SCALE 0.500

TITLE		ASSY,MOD,GAS_ TRAIN,COPPER,750-1000	
<div><div><div>HARSCO</div><div>INDUSTRIAL</div><div>Patterson-Kelley</div><div>East Stroudsburg, PA 18301</div><div>570-476-7261</div><div>www.harscopk.com</div></div></div>		<div>THIS DRAWING, INFORMATION AND THE SUBJECT MATTER THEREOF, ARE THE SOLE AND EXCLUSIVE PROPERTY OF HARSCO INDUSTRIAL, PATTERSON-KELLEY, EAST STROUDSBURG, PA 18301 USA. IT MAY BE REPRODUCED BY THE PURCHASER OF THIS EQUIPMENT FOR THEIR INTERNAL USE ONLY. IT CANNOT BE DISTRIBUTED TO ANY OTHER FIRM OR PARTY WITHOUT WRITTEN CONSENT FROM OUR COMPANY.</div>	

B	CN #2223 MARK 39 WENT FROM A 5" STEEL NIPPLE TO A 6" STEEL NIPPLE.	AMS	DCT	06/06/16
A	RELEASED FOR FABRICATION	SKM		3-16-16
REV.	DESCRIPTION	BY	CK'D.	DATE

ASME CODE		DESIGN PRESS.		TYPE X-RAY			APPROX. WEIGHT LBS.
YES	NO			NONE	SPOT	FULL	

QTY	MARK	QTY	QTY	PART NO.	MAT'L	DESCRIPTION
EA	UM	EA	UM	SPEC		
1	1	EACH	2300000020	BRASS	CONN,M,BRS,1/4"ODTX1/8"MPT,45DEG.	
2	1	.79 FT	2300000141	SILICONE RUBBER	TUBE,SILICONE_RBR,4MM_IDX8MM_OD,BLUE	
3	1	EACH	1003500112	BRASS	V,GAS_COCK,1-1/4",CONBRACO#50GB6A7	
4	1	EACH	1004200424	VINYL	GROM,KENNARD,825,1/2"IPS	
6	1	EACH	2300000054	MI	UN,3/4"-150#,FEM,BRZ-IRON,GR-JT	
7	2	EACH	1005101119	VARIOUS	SW,PRESS,GAS-LOW,0.4-5" W.C.,C6097A1004	
8	2	EACH	2300000018	BRASS	ADPTR,1/8"FNPT-1/8"-28,MALE_BSP/ISO_PRL	
9	1	EACH	2300000019	COPPER	GSKT,SWAGelok,CU-2-RP-2	
10	1	EACH	2300000102	VARIOUS	TUBE,CORR_SS,1/4",FLARE_ENDS,7.5"LONG	
11	1	EACH	2300000115	STEEL	TEE,1/8"FPT,MI	
12	2	EACH	2300000119	STAINLESS	NIP,PRESS_MEASURING,DUNGS,D219008, WITH GASKET	
13	1	EACH	2300000120	BRASS	TEE,1/8"MPTX1/4"BARB,1/4"BARB,BRS	
14	1	EACH	2300000148	BRASS	CONN,F,BRS,1/4"ODTX1/8"FPT,NO_NUT	
15	2	EACH	2300000207	STEEL	MCMaster-CARR 50635K227 OR EQUIV.	
16	2	EACH	2300000213	STEEL	NIP,3/4"XCL,SCH_40,SA-53,GR,B,STL	
17	1	EACH	2300000301	ZINC PLATED	NUT,HEX,1/4"-20NC,NYLOCK,ZP	
18	1	EACH	2300000328	ALUM.	FLG,V,GAS,DUNGS,1-1/4"FPT,#231-718	
19	1	EACH	2300000328	STEEL	BLT,U,SQ_BEND,FD_MODU,1000	
20	1	EACH	2310000017	STEEL MI	ELB,RDC,1"FX3/4"F,150#,MI	
21	1	EACH	2311000011	STEEL	USE McMaster-CARR PART NUMBER 44605K421 OR EQUIVALENT	
22	1	EACH	2311000022	VARIOUS	BNR_HD,FD_MODU,750-1000,NAT_GAS,CYAN	
23	1	EACH	2600000082	BRASS	BRKT,GAS_TN_SUPPORT,FD_MODU,750-1000	
24	2	EACH	2620000190	STEEL	NIP,PRESS_MEASURING,1/8",AH#750-010	
25	1	EACH	2640000298	STEEL	SPR_TENSION_TUBE_CLAMP_5/16_OD	
26	1	EACH	2640000298	ALUM.	SHTR,DUNGS,1"FPT,#253-205	
27	1	EACH	2640000339	VARIOUS	V,GAS,DUNGS,MODEL#MBC-SE_1000,P/N257-805	
28	1	EACH	2640000424	SEAL-GREEN	GSKT,GA-171-260-25,SEAL,GREEN,1/8THK, 14 x 10 x 1.5MM.	
29	1	EACH	2650000067	VARIOUS	V,GAS_COCK,3/4",CONBRACO#50GB4017A,DUAL 1/8" TAPPING, TEE HANDLE	
30	1	EACH	2671000062	STEEL	NIP,1"X2-1/2"LG,SCH_40,STL	
31	2	EACH	8381300420	STEEL	USE McMaster-CARR PART 44615K446 OR EQUIVALENT	
32	1	EACH	8381300620	ZINC PLATED	WSHR,FL,1/4",ZP	
33	1	EACH	8504500585	STEEL	WSHR,FL,3/8",ZP	
34	1	EACH	8504500585	STEEL	BSHG,1/4"X1/8",STL	
35	1	EACH	8531305050	MALLEABLE IRON	ELB,90,3/4"FPT,MI	
36	1	EACH	8531313450	STEEL	ELB,90,1-1/4"FPT,MI	
37	1	EACH	8554500032	STEEL	NIP,1/4"X.088"WLX1-1/2",STD,STL	
38	1	EACH	8554500085	STEEL	NIP,1/8"X.068"WXCL,STL	
39	1	EACH	8554500785	STEEL	NIP,1/8"X.068"WX2",STL	
40	1	EACH	8554519985	STEEL	NIP,1-1/4"X.140"WXCL,STL	
41	1	EACH	8554520485	STEEL	NIP,1-1/4"X.140"WX2-1/2",STL	
42	1	EACH	2600000271	STEEL	NIP,3/4"X6",SCH40,SA-53,GR,B,STL	



EXPLODED
SCALE 0.438

TITLE		ASSY,MOD,GAS_TRAIN,COPPER,750-1000									
HARSCO INDUSTRIAL		THIS DRAWING, INFORMATION AND THE SUBJECT MATTER THEREOF, ARE THE SOLE AND EXCLUSIVE PROPERTY OF HARSCO INDUSTRIAL, PATTERSON-KELLEY, EAST STROUDSBURG, PA 18301 USA. IT MAY BE REPRODUCED BY THE PURCHASER OF THIS EQUIPMENT FOR THEIR INTERNAL USE ONLY. IT CANNOT BE DISTRIBUTED TO ANY OTHER FIRM OR PARTY WITHOUT WRITTEN CONSENT FROM OUR COMPANY.									
Patterson-Kelley		East Stroudsburg, PA 18301 570-476-7261 www.harscopk.com									
2 OF 2	BY	DATE	FILE	REFERENCE NO.							
DRAWN	SKM	03-07-16	SIZE								
CHECKED	-			PRINT NO.							
APPROVED	-		D	2311000003							
ASME CODE		DESIGN PRESS.		TYPE X-RAY		APPROX. WEIGHT LBS.		REV.			
YES	NO			NONE	SPOT	FULL			B		